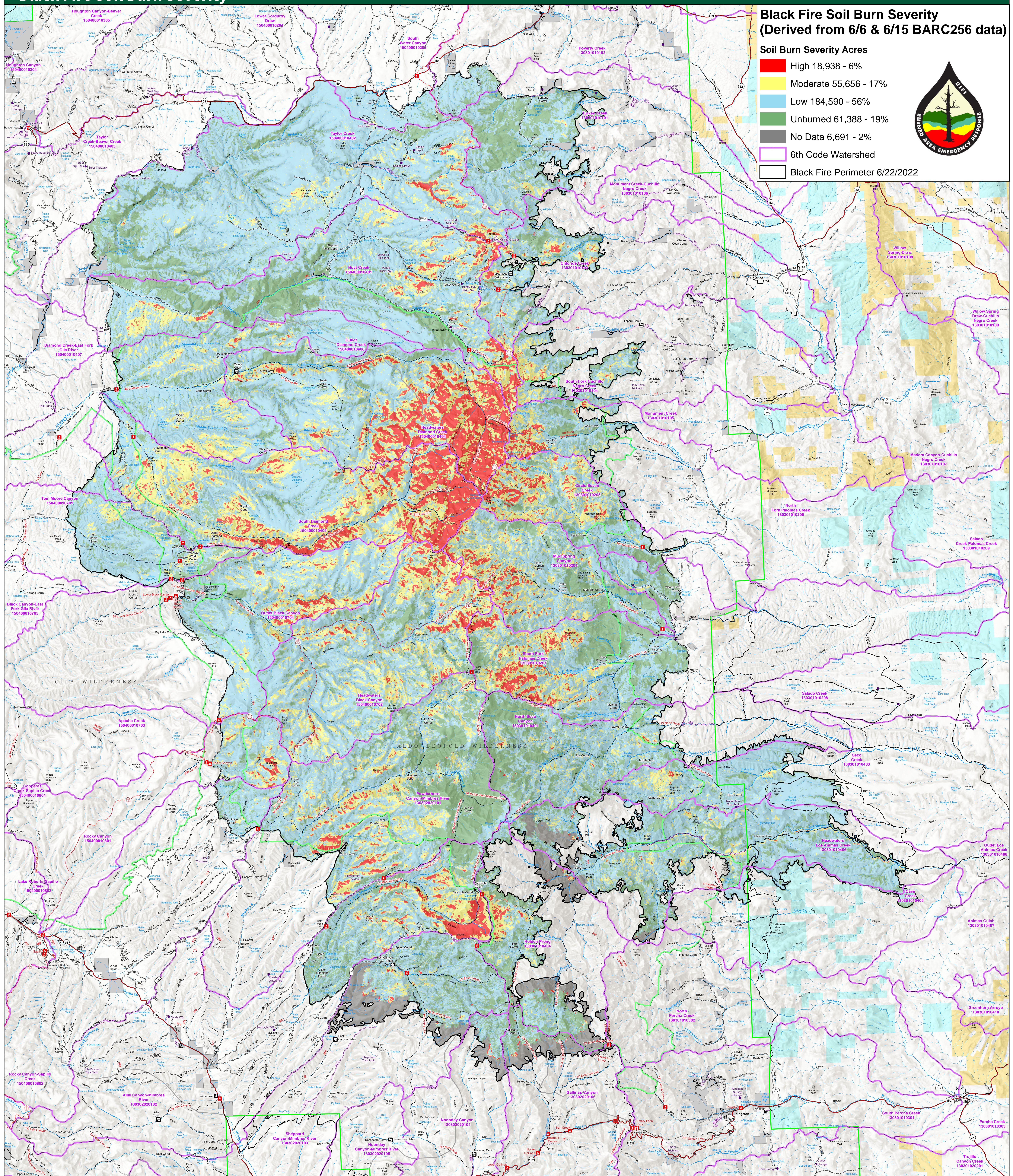


Black Fire Soil Burn Severity

Black Fire Soil Burn Severity (Derived from 6/6 & 6/15 BARC256 data)

Soil Burn Severity Acres

- High 18,938 - 6%
- Moderate 55,656 - 17%
- Low 184,590 - 56%
- Unburned 61,388 - 19%
- No Data 6,691 - 2%
- 6th Code Watershed
- Black Fire Perimeter 6/22/2022



NAD 1983 UTM Zone 12N
USDA is an equal opportunity provider, employer and lender

- | | | | | | | | | | | | | | | | | | | | |
|--|--|--|--|---|---|--|---|---|---|---|--|---|--|---|--|---|--|--|--|
| Gila National Forest Boundary | Wilderness Area Boundary | Ranger District Boundary | Internal non-Forest Land | Bureau of Land Management | Private | State | Highway | Improved Road, Paved | Improved Road, Gravel | Improved Road, Dirt | Private Road | Admin-Permit Only Road | Unimproved Road | Closed Road | Continental Divide NST | Non-Motorized Trail | Motorized Use Trail | Undeveloped-Primitive Trail | Abandoned Trail-Natural Decomby |
|--|--|--|--|---|---|--|---|---|---|---|--|---|--|---|--|---|--|--|--|

This product is reproduced from geospatial information prepared by the USDA Forest Service. Geospatial information and GIS product accuracy may vary. Using GIS products for purposes other than those for which they were created may yield inaccurate or misleading results. USDA Forest Service reserves the right to correct, update, modify or replace GIS products without notification.
Data Sources: 6/6 Landsat 8 & 6/15 Sentinel 2A BARC256 data provided
US Forest Service Geospatial Technology Applications Center (GTAC)